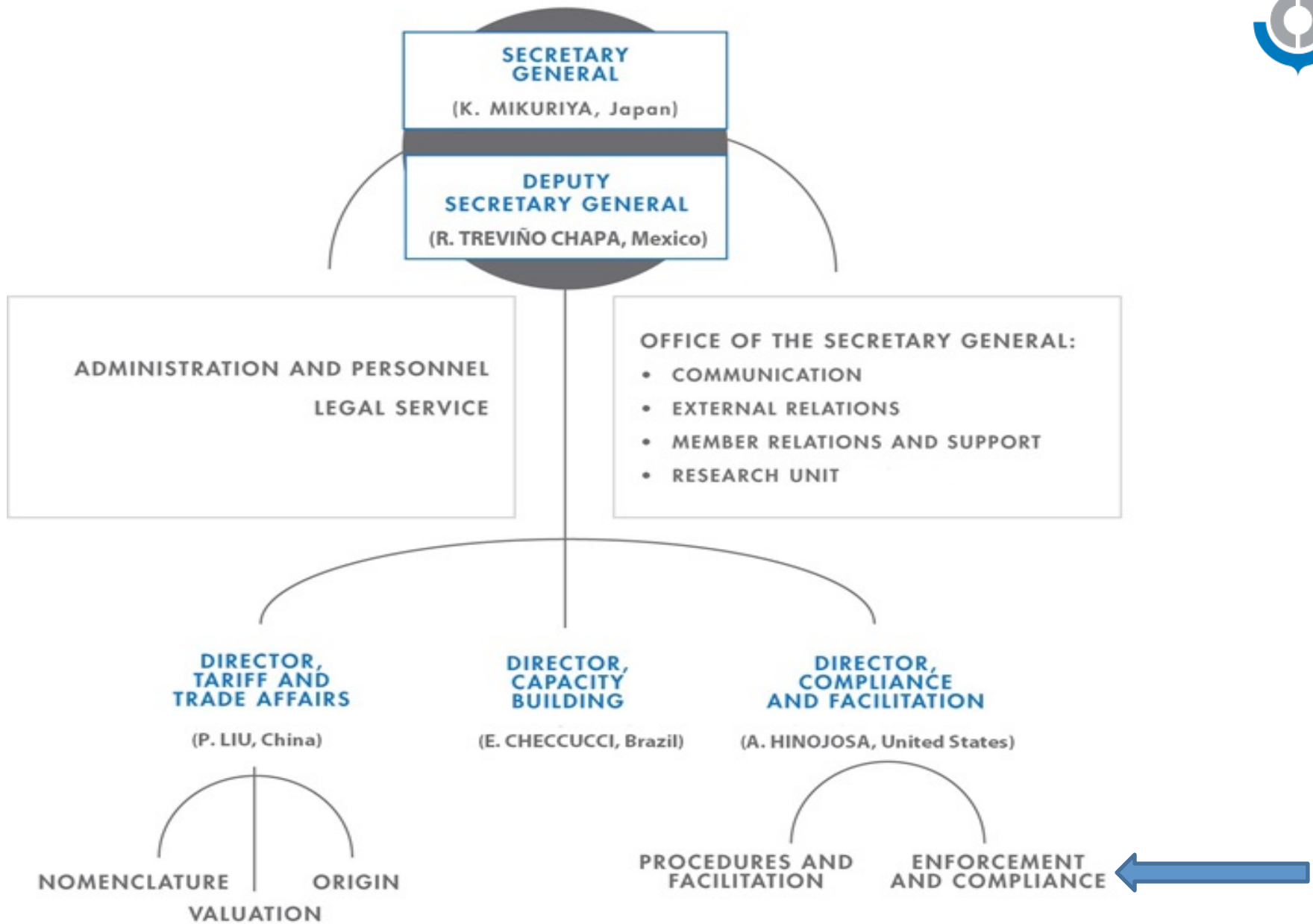


WORLD CUSTOMS ORGANIZATION

**Understanding Customs
Security Role and WCO
tools against
Transnational organized
Crime**

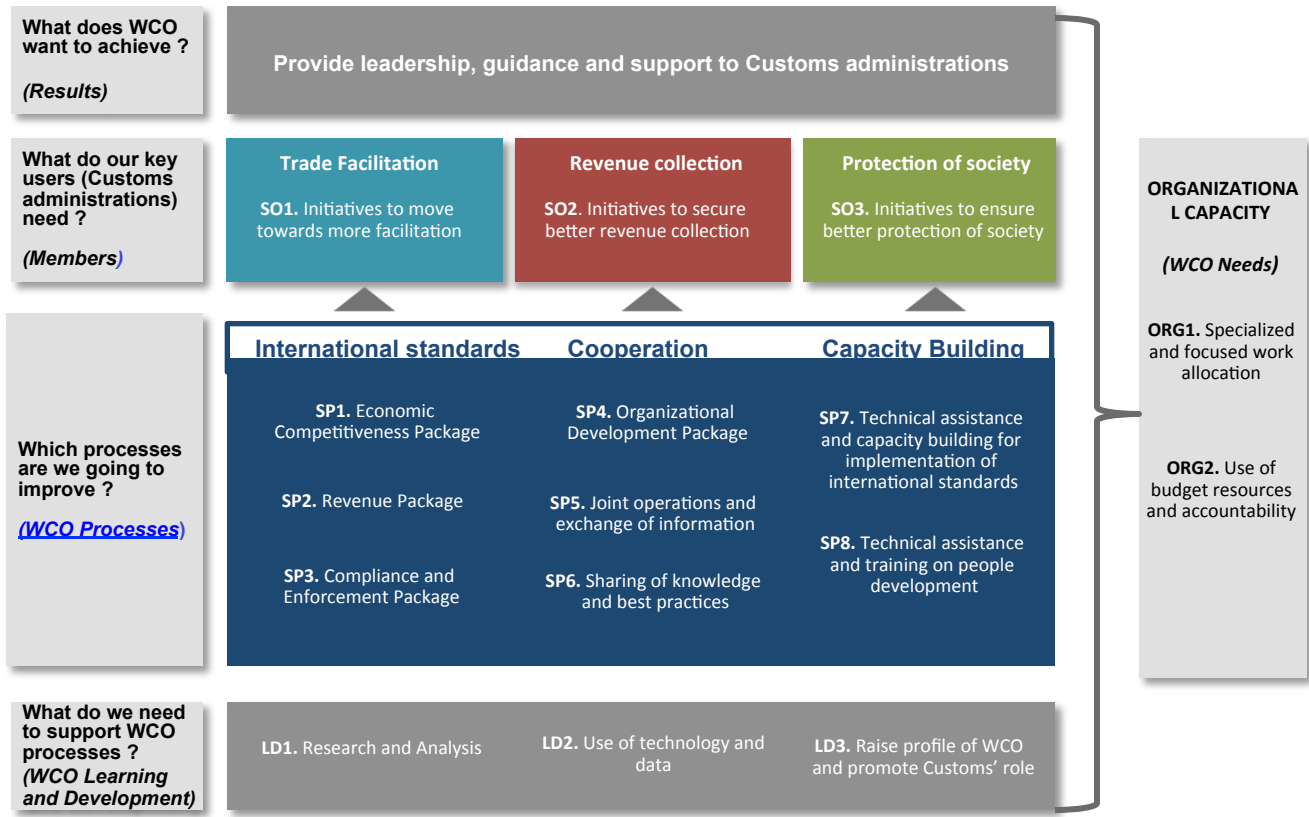
**Jim McColm
Technical Officer
Enforcement and Compliance
World Customs Organization**

Brussels, 15 July 2019





Strategic Map



WCO Vision Statement

Borders divide, Customs connects
Dynamically leading modernization and connectivity in a rapidly changing world.

Customs in the 21st Century

Promote the security and facilitation of international trade, including simplification and harmonization of Customs procedures
Strategic Goal 1



Promote fair, efficient and effective Revenue collection
Strategic Goal 2



Protect society, public health and safety, and contribute to combating crime and terrorism
Strategic Goal 3



Strengthen Capacity Building
Strategic Goal 4

Economic Competitiveness Package

Revenue Package

Compliance and Enforcement Package

Organizational Development Package

Strategic Goal 5 - Promote Digital Customs to support, in particular, Coordinated Border Management and information exchange between all stakeholders

Strategic Goal 6 - Raise the performance and profile of Customs

Strategic Goal 7 - Conduct Research and Analysis

WCO Values

WCO Mission Statement

"The WCO provides leadership, guidance and support to Customs administrations to secure and facilitate legitimate trade, realize revenues, protect society and build capacity".



Priorities and emerging trends

Coordinated Border Management

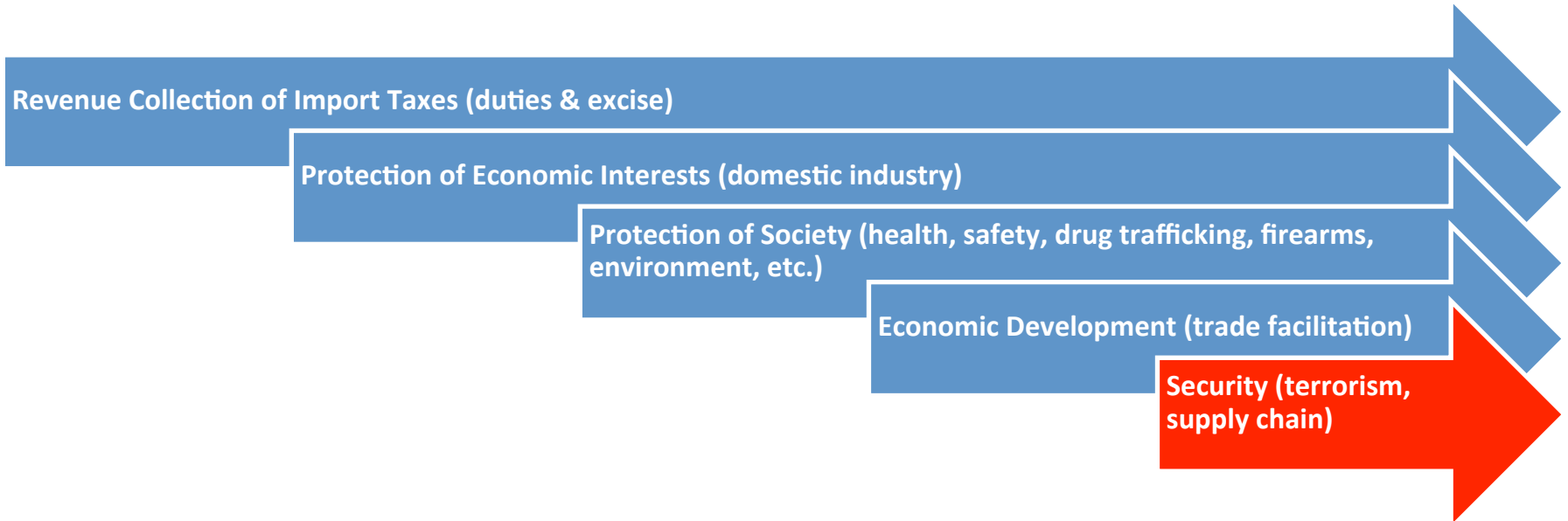
- ❑ Single Window
- ❑ Digital Collaboration
- ❑ Institutional Cooperation

Safety and Security

- ❑ Security Program
- ❑ Illicit Trade
- ❑ Intelligence-based control



Customs Role - Security





Customs Contribution

- **Risk and threats**
 - Supply and traveler chains as the main context
 - What can happen?
- **Understanding of international trade and travel**
- **Intelligence enabled and information based risk assessment and targeting scenarios**
- **Customs powers**

Customs can significantly contribute to national security
- **Role of Customs**

Lead vs. support



Security: What is the WCO doing?

Strategic Level:

Punta Cana Resolution

WCO Security Strategy

Operational Level:

WCO Security Programme activities and initiatives

WCO Operations – CHIMERA & COSMO 2

Punta Cana Resolution- Customs Security Mandate



In December 2015, the WCO's Policy Commission issued a very significant resolution with respect to the security role of customs.

Key points:

- Include security in their mandate and strategic plans.
- Cooperation at national, regional and international level between Customs authorities and other law enforcement authorities.
- Use the full extent of the law to secure an appropriate level of punishment (deterrent).
- Provide financial support to ensure that Customs authorities can contribute to WCO Security Programme activities.
- Make Use of the available WCO Security Programme training and reference materials.



Where can coordinated Border Management Work?



Composition

- Passenger Information Units
- Port Control Units
- Joint control team
- Border Agencies or virtual units

What other agencies are involved?

What are the ToR's / SoP's

Tasks

- Passengers Targeting
- Freight Targeting
- Interdiction of passengers
- Freight examination – Explosive, IED precursors, CT risks
- Radiological Nuclear detection

Customs: lead or support?

CEP

Compliance & Enforcement Package



TOOLS

Risk Management
Compendium

Post-Clearance
Audit
Guidelines

COPES

Risk Area-
Specific
Tools

NETWORKS & TECHNOLOGY

RILOs

CEN

CENcomm

nCEN

CTS

IPM

IRIS

HIGH-RISK AREAS FOR CUSTOMS ENFORCEMENT

Revenue

Security

IPR, Health
and Safety

Drugs

Environment

Emerging
Risks

PARTNERSHIPS

Customs-to-
Customs

Customs-to-
Business

Other Border
Agencies

International
Partners

OPERATIONS

Strategic goods

Chimera,
GS MENA

IPR

Acim II, Action IPR,
Mirage, PangeaXI

Cocaine

Cocair V

Tobacco

Gryphon II,
Pegasus

Environment

Save « REP »,
Wisdom

Methamphetamine

Westerlies 4



WORLD CUSTOMS ORGANIZATION
ORGANISATION MONDIALE DES DOUANES

WCO tools



&



&

CEN comm

WCO-OMD

*...technology for better
Customs enforcement*

&



WCO Customs Enforcement Network Applications



**CEN
Application
Suite**

CEN

- Customs Administrations



nCEN

- Customs Administrations

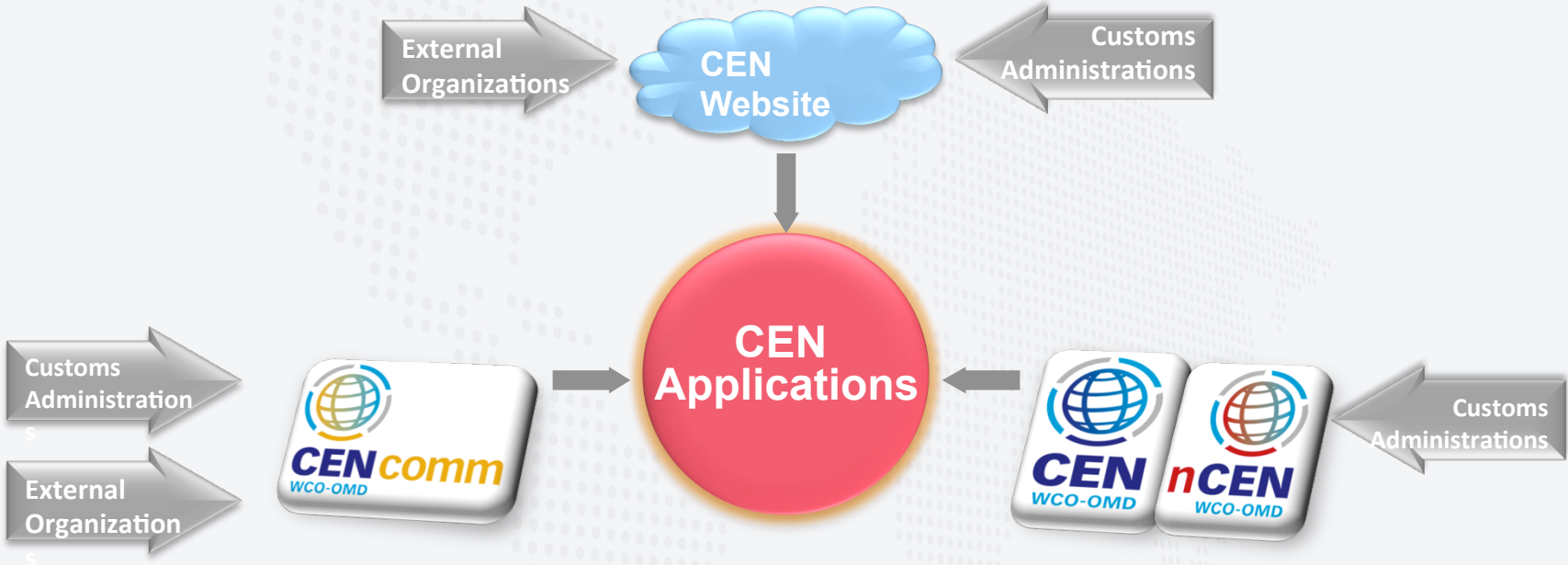


CENcomm

- Customs Administrations
- External Organizations



WCO CEN Applications

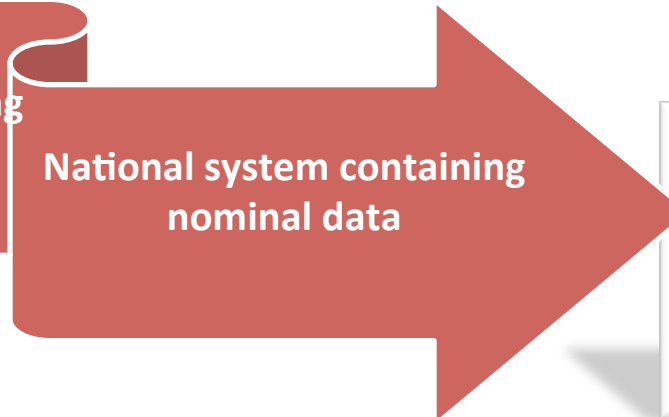


Information can only be transferred between applications manually by the owner of the information



Global system containing
non-nominal data

- Seizures and offences
- Photos



National system containing
nominal data

- Seizures and offences
- Suspects
- Companies
- Photos



- CEN is managed by the WCO while nCEN is managed at the national level
- Non-nominal part of the data can be transferred between the nCEN and the CEN automatically with the use of Icomm



secured communication
tool for operational
purposes

system with a database
(non-nominal) and other
enforcement tools



- No link between the two applications
- Information can only be transferred between the applications manually by the owner of the information

CENcomm



- ▶ Real time secure communication platform
- ▶ Generally created for operational (short term) use
- ▶ Exchange of nominal information possible
- ▶ export/upload of non nominal information from CENcomm to CEN database
- ▶ Different level of access granted
- ▶ Library / MS Access Database / Operational Statistics

CENcomm



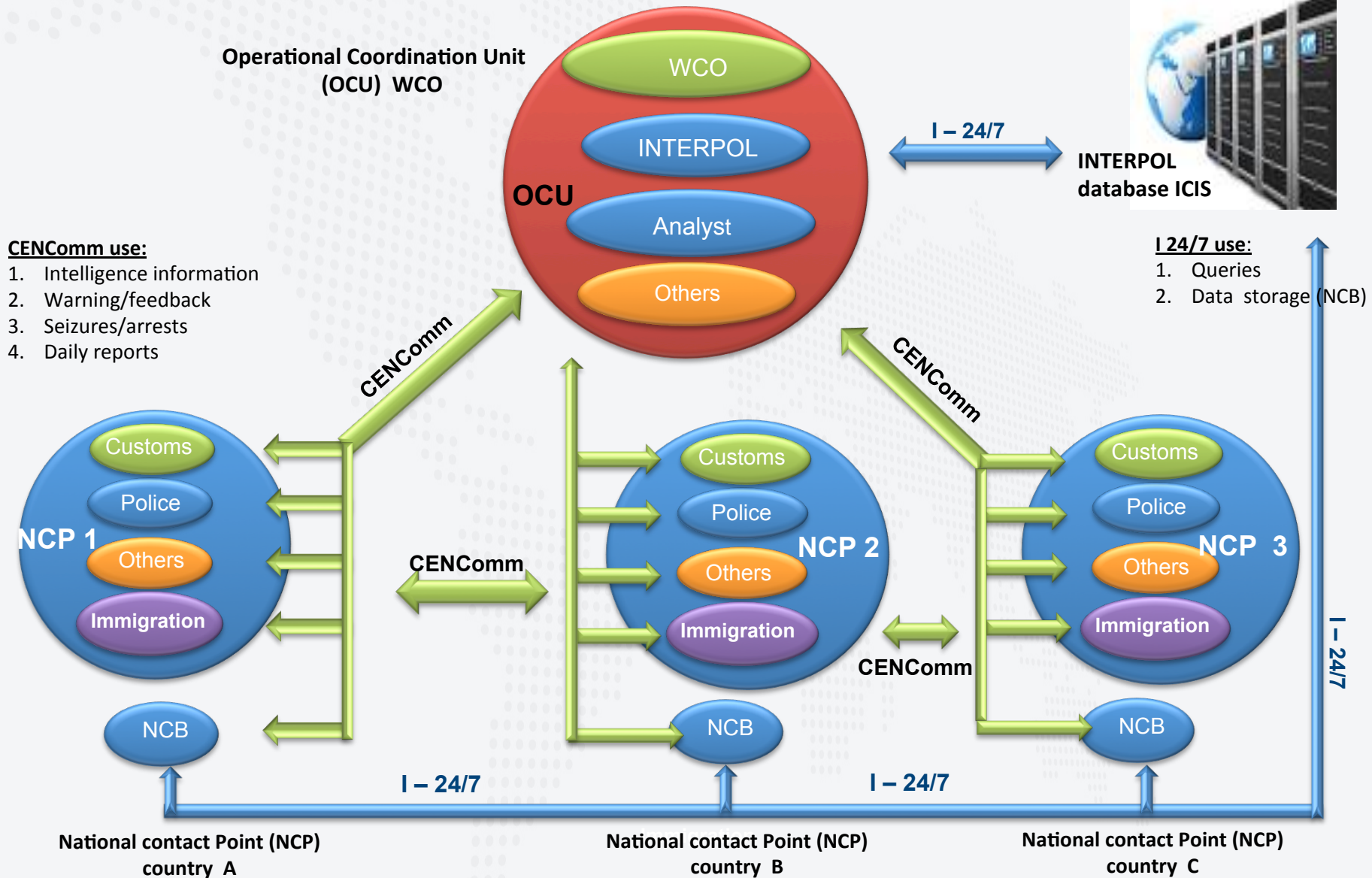
- ▶ Secured https:/ communication platform with personal login and password
- ▶ Encrypted data storage on the WCO server
- ▶ Only accessible for closed user groups during their active operation/project
- ▶ Operational Coordination Unit (OCU) to be setup worldwide if internet connection is available
- ▶ Available in English, French, Spanish, Portuguese, Russian, Dari and Urdu



Operational Communication



WORLD CUSTOMS ORGANIZATION
ORGANISATION MONDIALE DES DOUANES





CENcomm



Your profile

Surname	<input type="text"/>	* (or office name)
First Name	<input type="text"/>	
Country	<input type="text" value="POLAND"/>	
Service	<input type="text" value="Customs"/>	
Office name	<input type="text"/>	* (or surname)
Office hours	<input type="text"/>	
Out of hours tel	<input type="text"/>	
Address	<input type="text"/>	
Tel	<input type="text"/>	*
Fax	<input type="text"/>	*
Language	<input type="text" value="English"/>	
Email	<input type="text" value="ielatko@wcoomd"/>	*
Email 2	<input type="text"/>	
Mail alerts	<input type="text"/>	
Library alerts	<input type="text"/>	

* indicates mandatory field

Automatic email to the user's personal email account to inform them that there is a new message or a new document in the library

Language	<input type="text" value="English"/>
Email	<input type="text" value="agnes.butrym-bielatko@wcoomd"/>
Email 2	<input type="text"/>
Mail alerts	<input type="text" value="Yes"/>
Library alerts	<input type="text" value="Yes"/>

* indicates mandatory field



Possibility to choose the language in which the application/templates will be displayed!



CENcomm

← → ↻ <https://globalshield.wcoomd.org/itp/en/>

WORLD CUSTOMS ORGANIZATION

WCO - OMD : closed user group "global shield"

Home Mailbox Logout

Your role - NCP

- Profile
- Password

Formatted messages

- warning
- feedback
- seizure

Messages database

Library

Operation users

Container number

User guide

Helpdesk

Email recipients

- NCPs
- All users in my country
- Choose manually - Select [all] - [none]

Attachments

File 1 : No file chosen

Subject

Message

- ❖ *Different users 'roles' - OCU+, OCU, NCP, PU*
- ❖ *Formatted templates*
- ❖ *Messages database*
- ❖ *Operation users*
- ❖ *Library, manuals*

CENcomm mailbox

- ▶ Enables to send multiple attachments of up to 10 MB (all type of files)
- ▶ Enables to see if your message was already read by the recipients



The screenshot shows a web browser window with the URL https://globalshield.wcoomd.org/tp/en/inbox_details.jsp?id=1001904&box=null&isBusinessMail=0&emailCug=126. The page title is "CEN - Mailbox". Below the title, there are buttons for "Delete", "Reply", "Reply All", and "Forward". The message details are as follows:

To - read	46 recipients
To - unread	250 recipients
From	Ulrich Meiser - (OCU-WCO)
Sent	17/03/2012 16:17
Subject	Second WCO Seminar Programme Global Shield 2-4 April 2012

The message body starts with "Dear all,". Below the message body, there are four attachments listed in a table:

	seminar-agenda-gs-b-versionFR.doc
	seminar-agenda-gs-b-versionENG.doc
	reminder-invitation-FR.docx
	reminder-invitation-ENG.docx

At the bottom of the message, it says: "Please find appended hereto a reminder to attend the **Second WCO Seminar April 2012** incl. the latest draft Agenda (in English and French)."

CENcomm mailbox

- ▶ To create folders e.g. for feedback, seizure or warning messages
- ▶ To reply to warning message with the feedback or a seizure message



WCO - OMD - Mailbox

Order inbox folders Add new folder Show: 25 Order outbox folders

Folders		From	Subject	Date	
Mailbox (124)	✉ 0 ISO2	Tayseer Shboul	Abu Dhabi customs summary report February 2012	26/03/2012 12:39	☐
feedback (15)	✉ 0 AE	Ulrich Meiser	Second WCO Seminar Programme Global Shield 2-4 April 2012	17/03/2012 16:17	☐
seizure (33)	✉ 0 WCO	Marcell Ronald	US Monthly Report Feb 2012	01/03/2012 14:13	☐
warning (29)	✉ 0 US	Tayseer Shboul	Abu Dhabi customs summary report January 2012	20/02/2012 09:45	☐
Waste bin (8)	✉ 0 AE	Angelina Lovell-Johnson	Monthly Report	17/02/2012 15:33	☐
Outbox (1)	✉ 0 BB	Marcell Ronald	US Jan 2012 Monthly Report	07/02/2012 18:10	☐
Waste bin (0)	✉ 0 US	CARICC	Thai police find large cache of bomb-making materials	17/01/2012 05:15	☐
	✉ 0 ORG	CARICC	Seizures in Russia	16/01/2012 11:19	☐
	✉ 0 ORG		DECEMBER 2011 SUMMARY REPORT	16/01/2012 00:58	☐

CENcomm Templates

WARNING

FEEDBACK

SEIZURE

global shield:WARNING MESSAGE

[Expand](#) [Collapse](#) [Store](#) [Submit](#)

General Remarks

Number *This number will be*
 Originator Agnes
 Telephone +322 209 9325 **global shield:FEEDBACK MESSAGE**
 Country WCO OMD secre
 Date of notification 19/3/2012 21:41 **WARNING MESSAGE**
 Office notifying the seizure [Link this message](#)
 Office in charge of further investigation **FEEDBACK: DETAILS OF THE CONTROL**

Route
Suspected courier/offender
Motive of suspicion

Feedback type *This number will be assigned automatically by the system* Originator Agnes
 Pre-arrival phase Post-arrival phase

Global shield precursors

- Acetic Anhydride 2915 **Comments**
- Acetone 2914 11
- Aluminium Powder 7603
- Ammonium Nitrate 3102
- Calcium Ammonium Nit
- Hydrogen Peroxide 284 **Control**
- Nitric Acid 2808 00
- Nitromethane 2904 20
- Potassium Chlorate 282 **Result**
- Potassium Nitrate 2834 **Motive of no**
- Potassium Perchlorate ;
- Sodium Chlorate 2829 **Narrative**
- Sodium Nitrate 3102 50
- Urea 3102 10

Pre-arrival risk indicator

- Bill of Lading - Place of issue not con
- Consignee - Same as for 'Shipper'
- Container - incomplete or false numo
- Container - Owned by shipper
- Cube - Same as for 'Weight'
- Goods - Difficult to examine
- Goods - Goods versus type of contain
- Goods - Not consistent with country c
- Goods - Not consistent with harvests

global shield : SEIZURE MESSAGE

SEIZURE MESSAGE

[Link this message](#)

[Expand](#) [Collapse](#) [Store](#) [Submit](#)

General Remarks

Seizure

Commodity Type [Explosives precursors](#)
 Seizure date Seizure hour
 Location Location type
 Country Port
 Detection Method Use of technical device

Other use of technical device

File 1 :

Route
 List of existing entries here - click on the add button or data will not be included with the message

Attach more

Other at

Country
 Location
 Airport/seaport code
 clr(126,1501-9)
 Route date
 Transport

Location type
 Order
 clr(126,1501-10)
 Route time

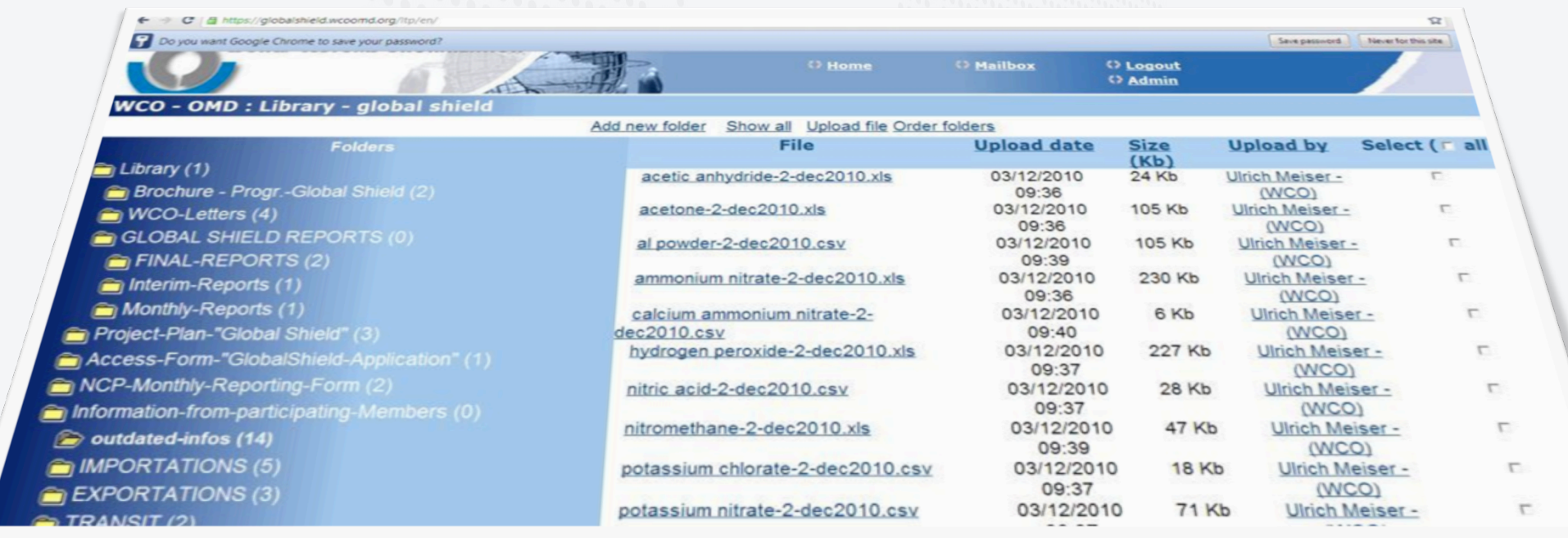
Attach more

Courier/offender
 Conveyance
 Parties involved
 Declared goods
 Pictures available
 Other attachments
 Narrative

[Expand](#) [Collapse](#) [Store](#) [Submit](#)

CENcomm Library

- ▶ Possibility to create folders for newsletters, messages etc.
- ▶ Upload of up to 10 MB (all types of files)



The screenshot shows a web browser window displaying the 'WCO - OMD : Library - global shield' interface. The page includes navigation links for Home, Mailbox, Logout, and Admin. Below the navigation bar, there are options to 'Add new folder', 'Show all', 'Upload file', and 'Order folders'. The main content area is a table with columns for Folders, File, Upload_date, Size (Kb), Upload by, and Select (all). The table lists several files uploaded by Ulrich Meiser - (WCO) on 03/12/2010.

Folders	File	Upload_date	Size (Kb)	Upload by	Select (all)
Library (1)	acetic anhydride-2-dec2010.xls	03/12/2010 09:36	24 Kb	Ulrich Meiser - (WCO)	<input type="checkbox"/>
Brochure - Progr.-Global Shield (2)	acetone-2-dec2010.xls	03/12/2010 09:36	105 Kb	Ulrich Meiser - (WCO)	<input type="checkbox"/>
WCO-Letters (4)	al powder-2-dec2010.csv	03/12/2010 09:39	105 Kb	Ulrich Meiser - (WCO)	<input type="checkbox"/>
GLOBAL SHIELD REPORTS (0)	ammonium nitrate-2-dec2010.xls	03/12/2010 09:36	230 Kb	Ulrich Meiser - (WCO)	<input type="checkbox"/>
FINAL-REPORTS (2)	calcium ammonium nitrate-2-dec2010.csv	03/12/2010 09:40	6 Kb	Ulrich Meiser - (WCO)	<input type="checkbox"/>
Interim-Reports (1)	hydrogen peroxide-2-dec2010.xls	03/12/2010 09:37	227 Kb	Ulrich Meiser - (WCO)	<input type="checkbox"/>
Monthly-Reports (1)	nitric acid-2-dec2010.csv	03/12/2010 09:37	28 Kb	Ulrich Meiser - (WCO)	<input type="checkbox"/>
Project-Plan-"Global Shield" (3)	nitromethane-2-dec2010.xls	03/12/2010 09:39	47 Kb	Ulrich Meiser - (WCO)	<input type="checkbox"/>
Access-Form-"GlobalShield-Application" (1)	potassium chlorate-2-dec2010.csv	03/12/2010 09:37	18 Kb	Ulrich Meiser - (WCO)	<input type="checkbox"/>
NCP-Monthly-Reporting-Form (2)	potassium nitrate-2-dec2010.csv	03/12/2010 09:37	71 Kb	Ulrich Meiser - (WCO)	<input type="checkbox"/>
Information-from-participating-Members (0)					
outdated-infos (14)					
IMPORTATIONS (5)					
EXPORTATIONS (3)					
TRANSIT (2)					

CENcomm functionality

- ▶ Automatic creation of (daily) newsletters – containing operational statistics, seizures information (including photos), involvement of international organizations, information from other partners/LEAs etc.
- ▶ Allow CUG organizer to create and reset passwords related to their group (OCU+).
- ▶ OCU able to create and ACCESS database of seizures at any time of the operation.
- ▶ ‘Close Case’ function – if a warning message has got a feedback or a seizure message linked to it, the OCU should see the message as closed.
- ▶ response time for warning message included.

IRIS application



World Customs Organization
Organisation Mondiale des Douanes

FR / EN

 Connect

Filter news by your preferred language



SEARCH

Peru relies on high legume-exporting potential

Peru | 18/07/2016



Among Latin American countries, Peru has one of the greatest potentials to produce legumes, and thus Categories: **Procedures and facilitation, Tariff and trade affairs**

Bulgaria and Turkey has signed a protocol for the implementation of the EU-Turkey readmission

Bulgaria | 18/07/2016



The interior ministers of Bulgaria and Turkey has signed the Protocol for implementation of the Agree Categories: **Generic enforcement issues, Procedures and facilitation**

Betel leaves seized

Kuwait | 18/07/2016



An Ethiopian woman was arrested at Kuwait International Airport in possession of three kilograms

Show more



IRIS application

- ▶ Iris collects, aggregates, validates and displays open source Customs-related information
- ▶ Iris searches selected open-sources for customs related information based on automated and manual search criteria
- ▶ The application displays the most relevant hits on a graphical world map
- ▶ Database provides detailed searches, analysis and data mining to MS
- ▶ database of information to enhance customs analysis and risk assessment.
- ▶ Tool for to get situational awareness
- ▶ Accessible for customs administrations, intelligence analysts and operational front-line officers
- ▶ Medium- to long-term goal of Iris is for the WCO to become global hub for customs and border-related information sharing

CLiKC e-learning modul

https://clikc.wcoomd.org

CLiKC! English (en)

You are not logged in. (Log in)



WORLD CUSTOMS ORGANIZATION
ORGANISATION MONDIALE DES DOUANES

LOGIN

Username

wara

Password

Log in

[Lost password?](#)



Welcome to CLiKC! - The WCO Customs Learning and Knowledge Community

CLiKC! the WCO Training Portal gathers all training-related tools in a single portal. This website offers to the worldwide Customs Community a single entry point for WCO training activities and a collaborative portal to share and foster Customs knowledge.

Disseminate training

Through the WCO e-learning courses, customs knowledge is a few clicks away. More than 250 hours of courses on various customs subjects are now available in English, French, Arabic, Spanish and Portuguese. [Take a demo course!](#)

All officers from WCO Member administrations can be registered and access the courses for free.

Produce and store teaching contents

The CLiKC! portal is also used to capitalize and standardize WCO expertise, and manage knowledge created by both in-house experts and accredited experts.

Collaborate to strengthen knowledge

This collaborative platform allows strengthening Customs training initiatives and networks by creating communities gathered around virtual tools to create, comment and design training contents and strategies.

MORE ABOUT CLiKC!

[What is CLiKC! ?](#)



Also read our brochure for more information.

(also available Spanish)

NEW



HS2017 Mobile App

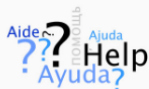
MERCATOR



Mercator
Programme

[Discover the Mercator Programme](#)

HELP



Communication for Training

Forums
Chats
Calendar



Evaluation

Quiz
Exercises
Surveys
Assianments



WCO FRAMEWORK

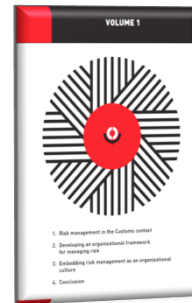


WCO Framework of Principles and Practices on Customs Professionalism

WCO Customs Risk Management Compendium



Adopted by the Council in June 2011 “Our approach to Risk Management”
Available through WCO Web site Remains a living document



- **Common part:**
Introduction, glossary
- **Volume 1:**
Principles, framework,
process for managing risk
- **Volume 2: (Members only)**
Operational risk
management, tools and
instruments

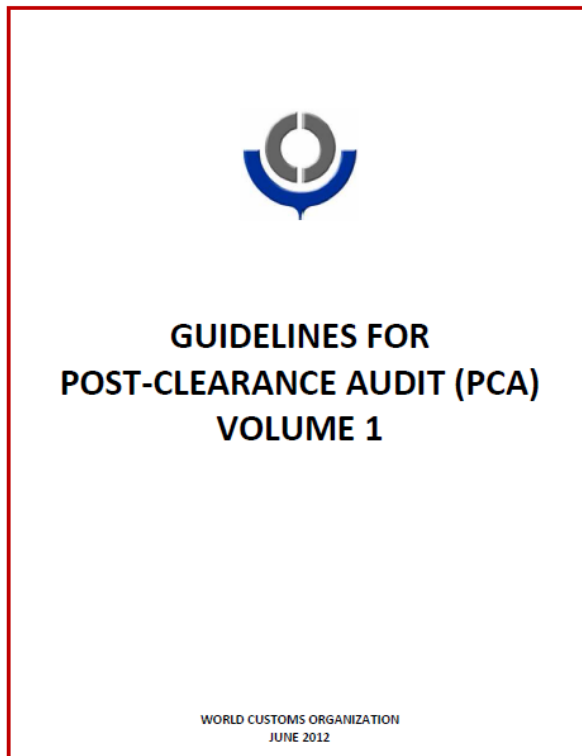


PCA Guidelines

(Adopted by the Council in 2012)

Theoretical background:

- **Volume 1 :**
Benefits,
Strategic
development and
Implementation of
PCA
- **Volume 2 (restricted):**
Operational guidance
on conducting on-site
audits



COPES



Compendium of Customs Operational Practices for Enforcement and Seizures

Key words:

- Customs – Police cooperation practices
- How to turn Customs seizures into Police cases





NETWORKS & TECHNOLOGY

RILOs

CEN

CENcomm

nCEN

CTS

IPM

IRIS

Networks & Technology



WCO Regional Intelligence Liaison Offices





The RILO network Recommendations:

- Design and support regional intelligence- led operations
- Produce regional tactical analysis to support law enforcement authorities
- Collect, evaluate and disseminate information on Customs offences through the CEN
- Assist Customs administration with their analysis in specific cases
- Facilitate the exchange of case-related operational information in accordance with relevant legal provisions
- Verify regional seizure information is being entered into CEN
- Validate the regional seizure information submitted by the National Contact Points (NCPs)



The RILO network Recommendations:

Produce periodic intelligence bulletins containing information on:

- Seizures of global and regional relevance
- Regional trend analysis
- Regional analytical reports
- Produce intelligence alerts and intelligence profiles and
- Implement target-oriented intelligence analysis projects

Two or more RILO offices often work together to address inter-regional operations and projects. Through the WCO committee structure endorsement, the RILO network also engage in Global operations and projects.



Partnerships

- **Customs-to-Customs (C-2-C)**
 - Partnerships between Customs administrations
- **Customs-to-Business (C-2-B)**
 - Partnerships between Customs and Private Sector entities
- **Customs-to-Other Border Agencies (C-2-OBA)**
 - Partnerships between Customs and other governmental agencies with border management responsibilities
- **WCO-to-International Governmental Organizations (C-2-IGO)**
 - Partnerships between WCO and other IGOs to facilitate global, regional and national border management and law enforcement cooperation

PARTNERSHIPS

Customs-to-Customs

Customs-to-Business

Other Border Agencies

International Partners



Instruments for Cooperation

- a) Recommendation of the Council on Mutual Administrative Assistance (December 1953)
- b) International Convention on Mutual Administrative Assistance for the Prevention, Investigation and Repression of Customs Offences, Nairobi Convention (June 1977)
- c) Model Bilateral Agreement on Mutual Administrative Assistance in Customs Matters (June 2004)



THANK YOU FOR YOUR ATTENTION

James.McColm@wcoomd.org